

# PORTABLE CHAMFERING MACHINE

- Portable Chamfering Machine.
- Steel plate chamfering-corner cut out for welding preparation.
- Convenient one touch adjustment of chamfering depth.
- Fine adjusting of chamfering depth (up to 0.16 mm).
- Improved cutter ensuring easy change of insert tips.
- Milling type cutter uses carbide insert tips.
- No vibration & smooth chamfered surface.
- Usable with pipes of diameters larger than 150 mm.
- Optional speed controller and inserts for chamfering stainless steel.
- CE Approved



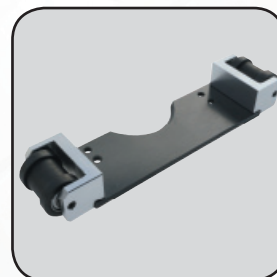
Chamfer Mill	Model No. AHA1000
Work piece Thickness (MIN)	3 mm
Chamfering Width (MIN)	0
Chamfering Width (MAX) (B)	10 mm
Chamfering Thickness (45°) (MAX) (A)	7 mm
Adjustable Operation Angle	15° - 45°
V-block Length	224 mm
Number of Inserts	5
Weight	10.4 kgs
Motor (Single Phase)	230 V 50/60 Hz 2400 W



Speed Controller  
Protecting the inserts from  
wearing rate by educing  
RPM when chamfering  
stainless steel.  
Part No. AHASCSS



One-Touch Adjustment  
Chamfering Depth



Roller Plate  
(Option)  
Part No. AHARP