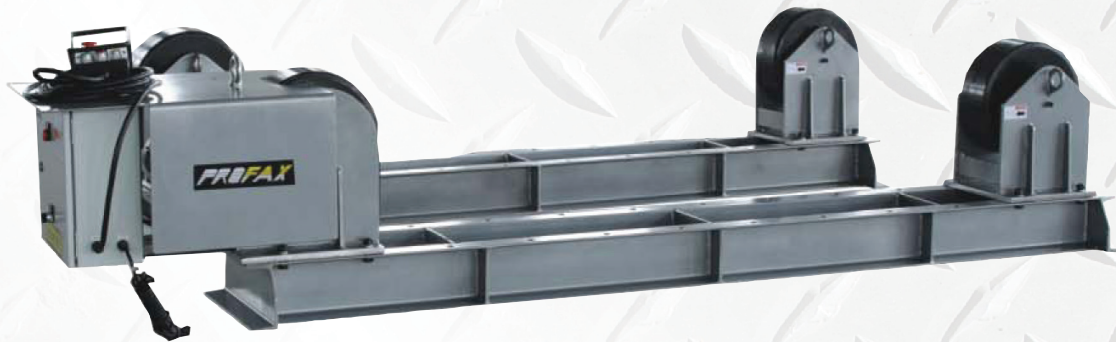


# TURNING ROLL



## Features

- 10 Ton (9,071 kg) capacity (1 Drive/ 1 Idler Max. 5 Ton (4,535 kg) each)
- 15 Ton (13,607 kg) rotating capacity with additional idler(s)
- 20" to 192" (500 mm to 4.8 m) diameter capacity
- 0-48 IPM Rotation speed
- Easily adjustable wheel spacing
- 5" x 13 1/2" (127 x 317mm) Wheels/Polyurethane over steel
- 1 H.P motor
- Hand pendant control with 25' (7.5 m) cord (24V)
- Weight 600 kgs
- Dimensions LxDxH: 3600 x 440 x 700mm
- 1 Year warranty
- Additional idler sets available: IR-10000

Part Number	Includes
TR20000-2	Machine and Hand Control