

Flange Pins

ST-106 / ST-206

ST-258



For accurate alignment of pipe flanges (carbon or stainless steel)

- ✓ Quick installing pins work as convenient reference points to level flange for tack and weld-out — no tools needed
- ✓ Hardened tapered ST-106 and ST-206 pins automatically center on 5/8" to 1-5/8" (16–42 mm) holes; ST-258 pins similarly set in 1-1/2" to 2-5/8" (38–66 mm) holes or flange thicknesses of 4-5/8" to 6-3/8" (117–162 mm)
- ✓ Features Acme threads for maximum clamping power and hardened steel for long lasting use



Part No.	Description	Weight	
		lbs	kg
780430	ST-106 Flange Pins	4.0	1.8
780429	ST-206 Stainless Steel Flange Pins	4.0	1.8
780650	ST-258 Flange Pins	32.0	14.5

Flange Leveler

- ✓ Now two-hole & level in one time-saving operation
- ✓ Uses push-button Qwik Pin nuts for fast action
- ✓ Features stub Acme threads for maximum clamping & hardened steel for lasting use



- ✓ Automatically centers in flange holes 5/8" to 1-5/8" (16–42 mm)
- ✓ Easily replaceable vials in the event of breakage

Part No.	Description	Weight	
		lbs	kg
781240	Flange Leveler	4.5	2.0
779934	Vial Kit	0.5	0.2

Flange SPREADER™

(Manual)



ST-301



ST-302



ST-303



ST-304

- ✓ 4 models to cover flange ranges from 1" (25 mm) to 24" (600 mm)
- ✓ Can be used for 150 to 1,500 lbs flanges
- ✓ Hardened wedge for safe splitting
- ✓ Large feed screw
- ✓ Drive can be rotated by 1-3/8" wrench or 1/2" (12 mm) bar
- ✓ Compact design – strong enough for tough jobs

Part No.	Description	Spread	Pin Diameter	150 lb	300 lb	400 lb	600 lb	900 lb	1,500 lb
784003	ST-301 Flange Spreader	3" (76 mm)	5/8" (16 mm)	1–6"	3/4–4"	1/2–2"	—	—	—
784002	ST-302 Flange Spreader	4" (101 mm)	3/4" (19 mm)	2–12"	1-1/2–8"	1–4"	1–4"	1–2"	1–2"
784001	ST-303 Flange Spreader	5" (127 mm)	7/8" (22 mm)	5–24"	2-1/2–12"	1-1/2–8"	2–6"	1–4"	1–3"
784000	ST-304 Flange Spreader	6-3/8" (162 mm)	1" (25 mm)	10–24"	7–24"	3-1/2–16"	4–10"	1–8"	1–5"

Flange SPREADER™

(Hydraulic)



Patent Pending

- ✓ 10 ton flange splitter to tackle the tough jobs
- ✓ Spreader arms adjust from 2-3/4" to 8-1/2" (70 mm to 215 mm)
- ✓ Spring return, single action cylinder
- ✓ Hardened wedge
- ✓ Simple operation
- ✓ Hand pump and 6' (1.5 m) hose available as accessories

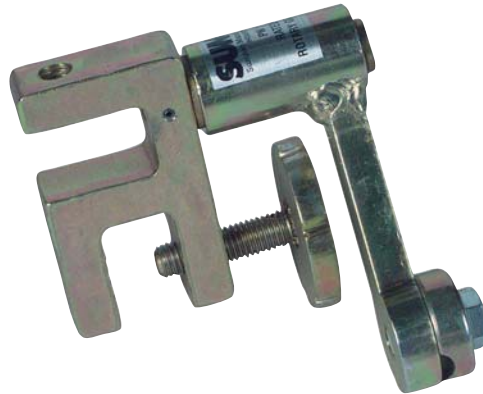
Accessories:
Part No. 777010
Hand hydraulic pump for Flange Spreader with 6' (1.5 m) hose and quick disconnect.

Part No.	Description	Capacity	Cylinder Capacity	Cylinder Stroke	Flange Pin Size	150 lb	300 lb	400 lb	600 lb	900 lb	1,500 lb
784004	ST-310 Flange Spreader	9 x 92 mm	10 ton	2" (54 mm)	1-1/4" – 1-5/8" (32–42 mm)	22–42"	16–28"	14–24"	12–20"	8–16"	4–8"

Rotary Ground Clamp

Puts an end to tangled ground leads

- ✓ Rotary head turns with the pipe — puts an end to ground lead twist, tangle and wear
- ✓ Provides quick, positive ground for roll-out welding of pipe and fittings — eliminates weld pinholes caused by poor grounding
- ✓ Attaches and detaches in seconds
- ✓ Makes up ground leads three ways — lug, clamp-on and bare cable
- ✓ Positive anti-arc bearings take loads up to 400 amps



Part No.	Description	Amp Capacity	Weight	
			lbs	kg
780435	Rotary Ground Clamp	400	4.0	1.8

FIT KIT



Now you can get the Ultra Clamp, the Ultra Fit, and the Internal Fit-Up Clamp ... all in one great package!



FIT-UP TOOLS

Fit Kit 2" - 6" contains:

- ✓ 2" - 6" Ultra Clamp
- ✓ 2" - 6" Ultra Fit
- ✓ 4" - 8" Internal Fit-Up Clamp
- ✓ Set of carbon steel flange pins
- ✓ Quad Level
- ✓ Weldbox 2008

Fit Kit 2" - 12" contains:

- ✓ Four (4) Fold-A-Jacks
- ✓ 2" - 6" Ultra Clamp
- ✓ 5" - 12" Ultra Clamp
- ✓ 2" - 6" Ultra Fit
- ✓ 5" - 12" Ultra Fit
- ✓ 2" - 4" Internal Fit-Up Clamp
- ✓ 4" - 8" Internal Fit-Up Clamp
- ✓ 8" - 12" Internal Fit-Up Clamp
- ✓ Quad Level
- ✓ Aluminum Square
- ✓ One set of Qwik Pins
- ✓ Weldbox 3617

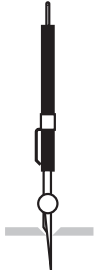
Part No.	Description	Weight	
		lbs	kg
780324	Fit Kit 2" - 6"	35.0	16.0
780315	Fit Kit 2" - 12"	283.9	129.0

Welding Gage

SUMNER



Accurate quick check of internal hi-lo



Root weld spacing with little effort

- ✓ Available in both imperial and metric
- ✓ Measure internal hi-lo misalignment and root weld gap spacing



Part No.	Description	Weight	
		lbs	kg
781900	Welding Gage—Imperial	0.3	0.1
781901	Welding Gage—Metric	0.3	0.1

FIT-UP TOOLS

For fast, accurate positioning of flat and round ferrous metal for welding and assembly!



Small Angle Fixture



Medium Angle Fixture



Large Angle Fixture

Fit-up is a snap with Sumner's line of magnetic welding fixtures ...



Multiple Angle Fixture



Heavy Duty, Fixed 90° Fixture



Position square tubing

Fit-up round tubing



Hold tubing to steel plate

Part No.	Description	Holding Capacity	Dimensions	Angle Configuration	Weight
781885	Multiple Angle Fixture	28.0 lb (12.5 kg)	3.75" x 0.5" x 2.5" (96 x 14 x 64 mm)	30°, 45°, 60°, 75°, 90°	1.0 lb (0.4 kg)
781886	Small Angle Fixture	48.5 lb (22.0 kg)	4.75" x 0.5" x 3.25" (120 x 14 x 82 mm)	45°, 90°, 135°	1.0 lb (0.4 kg)
781887	Medium Angle Fixture	90.0 lb (41.0 kg)	6.33" x 0.75" x 4.0" (160 x 20 x 102 mm)	45°, 90°, 135°	2.0 lb (0.9 kg)
781888	Large Angle Fixture	122.0 lb (55.0 kg)	7.88" x 0.89" x 5.0" (200 x 22 x 128 mm)	45°, 90°, 135°	3.0 lb (1.4 kg)
781875	Heavy Duty 90° Fixture	88.0 lb (40.0 kg)	8.2" x 8.2" x 1.8" (207 x 207 x 48 mm)	90°	6.0 lb (2.7 kg)

NLV™

(nice little vise)

SUMNER®

TRI-POD PIPE VISE & BENCH VISE



NLV Tri-pod Pipe Vise

Part Number 783207

- ✓ 1/8 to 2-1/2" (3-60 mm) pipe capacity
- ✓ 1/2" pipe bending shoes
- ✓ 1" heavy wall tubing for greater stability
- ✓ Large rubber skid pads bolted to leg
- ✓ Convenient carrying handle
- ✓ Light weight
- ✓ Great price

Bench Chain Vise

Part Number 783200

- ✓ 1/8 to 2-1/2" (3-60 mm) pipe capacity
- ✓ 1/2" pipe bending shoes
- ✓ Cast iron frame
- ✓ Hardened alloy steel jaws

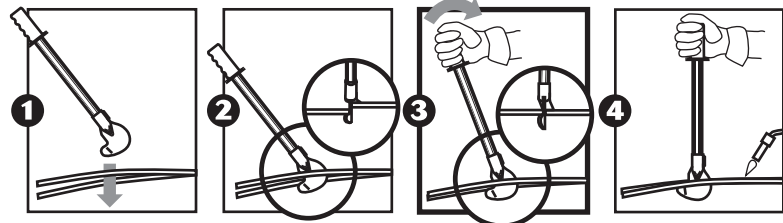
Part No.	Description	Weight	
		Lb	Kg
783207	NLV Tri-pod with Chain Vise	29.0	13.8
783200	Bench Chain Vise	7.5	3.4

Fit Stix

The Perfect
Fit-Up Tool
for Steel
Plate!



Align steel plate quickly and easily with Fit Stix!



- ✓ Rugged, lightweight design.
- ✓ Fast, accurate alignments.
- ✓ Drop forged heads.
- ✓ Head can be used for setting gap

Fit Stix #3

Maximum Range: 1/8" (3 mm)
Gap Setting: 1/16" (1.5 mm)

Fit Stix #8

Maximum Range: 5/16" (8 mm)
Gap Setting: 5/64" (2 mm)

Fit Stix #12

Maximum Range: 1/2" (12 mm)
Gap Setting: 3/16" (5 mm)

Part No.	Description	Weight	
		Lb	Kg
781850	Fit Stix # 3	1.00	0.50
781860	Fit Stix #8	1.43	0.65
781870	Fit Stix #12	1.87	0.85

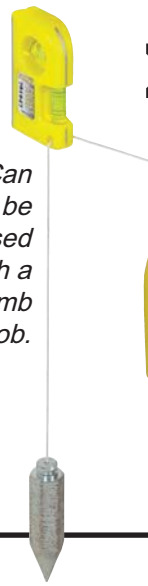
SUMNER



Level pipe for fit-up



Earth magnet on base and side to hold measuring tape



Can be used with a plumb bob.

Pocket Level (PN 781947)

A twin vial level constructed of tough ABS and aluminum frame, the strong magnetic base makes this pocket-size level great for many tasks.



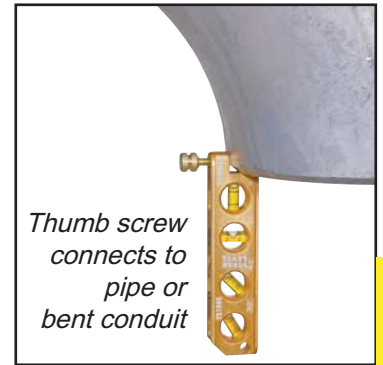
Weights just 3 oz. (84 g).

Versa Level (PN 781945)

Featuring a tough, anodized body and a magnetic base, the Versa Level comes with four vials (0°, 30°, 45°, 90°). There is also a "v" cut into the base for pipe and conduit work.



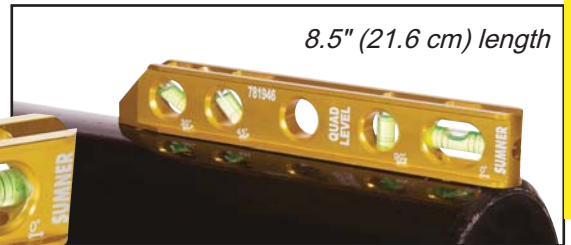
Easy read vials with magnetic base.



Thumb screw connects to pipe or bent conduit

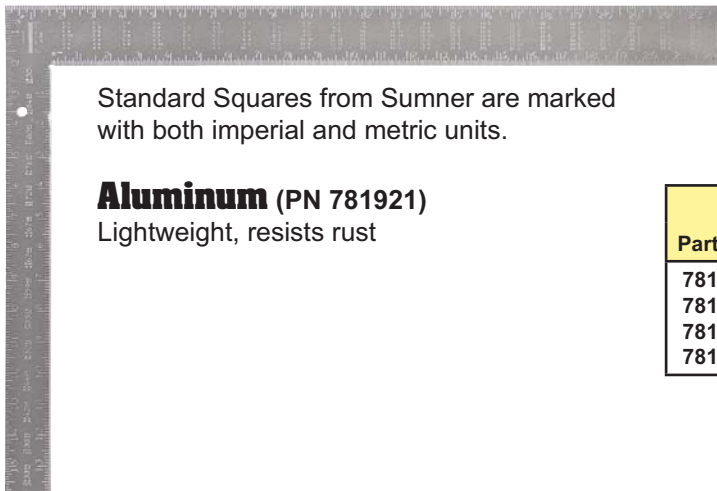
Quad Level (PN 781946)

This is a tough, anodized aluminum level with a magnetic base and four vials (0°, 30°, 45°, 90°). A "v" cut into the base makes the Quad Level great for pipe and conduit work.



8.5" (21.6 cm) length

Standard Squares



Standard Squares from Sumner are marked with both imperial and metric units.

Aluminum (PN 781921)

Lightweight, resists rust

Part No.	Description	Weight	
		lbs	kg
781921	Standard Square (aluminum)	0.8	0.4
781945	Versa Level	0.3	0.1
781946	Quad Level	0.4	0.2
781947	Pocket Level	0.2	0.1

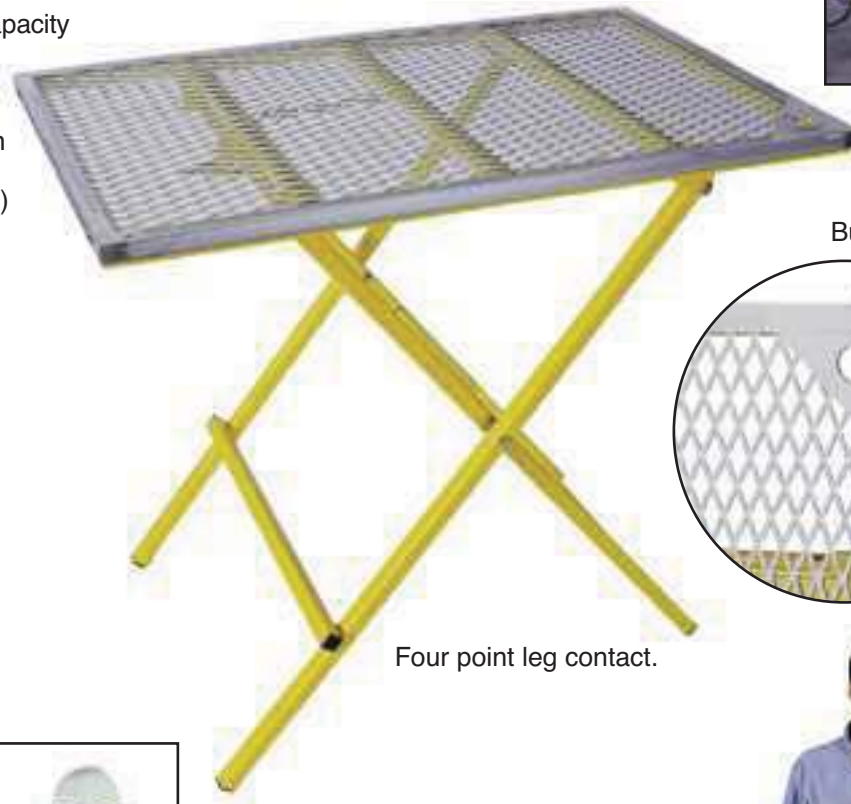
HANDi-BENCH

a portable
welding table



Use occasionally or as a permanent work bench

- ✓ Tough #9 expanded metal top
- ✓ 600 lb (270 Kg) load capacity
- ✓ 1" square tube frame
- ✓ One piece construction
- ✓ 24 X 40" (60 X 100 cm) work surface
- ✓ Table top plated for ground clamp



Built-in torch holder



Four point leg contact.



The optional 8" wheel kit for the Handi-Bench allows for rolling transport of table in folded position only.



Plunger pin locks legs in open or folded position.



Compact storage

Part No.	Description	Work Dimension			Load Capacity	Weight	
		Height	Depth	Length		Lb	Kg
783980	HB-604 Welding Table	36.3" (92.2 cm)	24.4" (62 cm)	40.4" (102.6 cm)	600 lb (270 Kg)	54.0	24.5
783965	8" Wheel Kit for Series 600 Handi-Bench					5.0	2.3

Center Punch

SUMNER

NEW!



- ✓ Easy to read digital gage
- ✓ Spring-loaded striking hammer
- ✓ Magnetic base
- ✓ Removable gage with magnetic base



Magnetic base



Push Button spring-loaded striking hammer



Alignment indicator



Gage with magnetic base

Center head with magnetic aluminum base can be used on the circumference of pipe or tanks. Digital gage provides highly visible, accurate reading when establishing a centerline. Built in spring loaded hardened striking pin marks location with the push of a button. Detachable digital gage comes with a magnetic base for additional leveling applications. Plus, digital gage doubles as an angle finder and can be zeroed out during fabrication.

Part No.	Description	Weight	
		Lb.	Kg.
784520	Center Punch	1.85	0.84
779546	Inclinometer	0.6	0.28

FIT-UP TOOLS

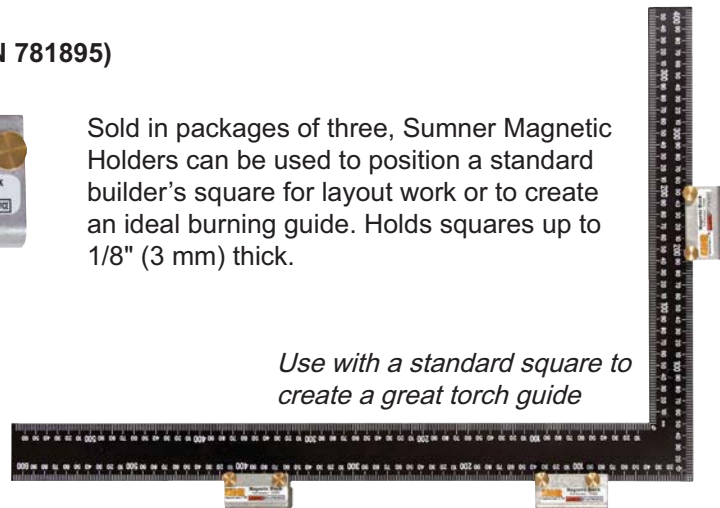
Magnetic Holders (PN 781895)



Sold in packages of three, Sumner Magnetic Holders can be used to position a standard builder's square for layout work or to create an ideal burning guide. Holds squares up to 1/8" (3 mm) thick.

Part No.	Description	Weight	
		lbs	kg
781895	Magnetic Holders	1.0	0.4
781896	Magnetic Torch Guide Kit	2.0	0.9

Use with a standard square to create a great torch guide



Magnetic Torch Guide Kit (PN 781896)

Kit includes two Sumner Magnetic Holders and a 24" (61 cm) stainless steel cutting rail for straight torch work.



MUL-T-SQUARE®

Makes problem fit-up easy and simple set-ups a snap!

- ✓ Lightweight, but durable
- ✓ Handles up to 8" (20 cm) flanges and up to 14" (35 cm) fittings
- ✓ Versatile for measuring 45° and 90° angles
- ✓ Blades marked with both Imperial and Metric units



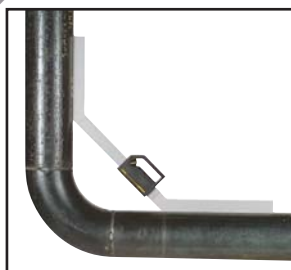
The Mul-T-Square consists of two 45° blades that slide effortlessly in an industrial-strength plastic handle. Each blade is made of stainless steel for precise alignment. The 10" (26 cm) and 14" (35 cm) arms allow for measurement of tight fit-ups or they can be expanded for up to 30" (76 cm) squaring of 90° fittings. In some instances, the 45° blades are handy by themselves for simple alignment. The blades are loosened or secured by a simple twist of the conveniently located locking knob.



FIT-UP TOOLS



Now get the Mul-T-Square with extended reach! Blades with 10" (26 cm) and 20" (52 cm) arms provide even greater range. Extended blades fit into the standard Mul-T-Square. Available as blades only or as a complete Mul-T-Square assembly.



Part No.	Description	Weight	
		lbs	kg
790000	Mul-T-Square complete (standard blades)	2.0	0.9
790001	Mul-T-Square handle only	0.3	0.1
790021	Mul-T-Square blades only (pair, standard)	2.0	0.9
790026	Mul-T-Square blades only (pair, extended)	2.5	1.1
790030	Mul-T-Square complete (extended blades)	2.0	0.9